



# **MEDICAL UNIVERSITY OF SILESIA**

**Guide book  
2025/2026**

# Contents

Message from the Rector	3
Authorities	4
Poland, Silesia, Katowice	7
Academic calendar	13
Medical University of Silesia	15
Apply step by step	18
Required documents	19
About SUM	21
Immigration rules - Residency Permit Card	22
Medical Care and health insurance	24
Cost of living	25
Accommodation	26
Traveling by plane and train	28
Public transport in Katowice	29
Erasmus+	30
Important addresses	31
FAQ	32
Embassies and consulates located in Poland	33
Admission Office address	34



**Professor Jerzy Stojko,**  
MD, PhD  
Vice-Rector for Academic Affairs

## Message from the Rector

The Medical University of Silesia in Katowice is a university established in 1948, modern, caring for the highest quality of education and constantly adapting its educational offer to the needs of the labor market. The university has six faculties located in Katowice Ligota, Zabrze, Bytom, Sosnowiec and Bielsko-Biała. Medical University of Silesia educates doctors, dentists, pharmacists, medical analysts, medical biotechnologists, as well as specialists in the field of public health, emergency medicine, dietetics, nursing, midwifery, physiotherapy, cosmetology, neurobiology, electroradiology, health risk management and medical coaching.

A significant number of graduates of the Medical University of Silesia practice medicine outside of Poland. All faculties and departments are highly engaged in scientific research thus their achievements in fields of cardiology, cardio surgery, nephrology, endocrinology, diabetology, rheumatology, surgery and ophthalmology, along with occupational medicine, biochemistry and histology, are well known all over the world.

Consequently, it provides a unique educational environment, offering access to the latest research results, as well as the most modern technology and state-of-the-art medical equipment.

As a student you will be encouraged to combine professional knowledge with practical skills and appropriate approach towards patients. I can assure you that the staff of the Medical University of Silesia is dedicated and committed to making your study effective and pleasant at the same time.

I truly believe that it was a right decision to choose our University as the source of your medical education. I hope that this prospectus will allow you to take an insight into our culture and tradition so that in the future you will be proud of being a graduate of the Medical University of Silesia. I would like to extend my warm invitation and wish you the greatest success in your professional career.

# Authorities



## **Rector**

Professor Tomasz Szczepański, MD, PhD  
phone. (+48 32) 208-35-55, 208-35-51  
e-mail: rektor@sum.edu.pl



## **Vice-Rector for Academic Affairs**

Professor Jerzy Stojko, MD, PhD  
phone. (+48 32) 208-35-57  
e-mail: rekst@sum.edu.pl



## **Vice-Rector for Promotion and International Cooperation**

Professor Wojciech Wojakowski, MD, PhD  
phone. (+48 32) 208-35-56  
e-mail: rekwsp@sum.edu.pl



**Vice-Rector for Post-Degree Studies  
and Promotion**

Professor Oskar Kowalski, MD, PhD

phone. (+48 32) 208-35-07

e-mail: reks@sum.edu.pl



**Vice-Rector for Clinical Affairs**

Professor Damian Czyżewski, MD, PhD

phone. (+48 32) 208-35-21

e-mail: reklin@sum.edu.pl



**Vice-Rector for Development and Transfer  
of Technology**

Professor Edward Wylęgała, MD, PhD

phone. (+48 32) 364-10-94

e-mail: rekroz@sum.edu.pl



# Poland

**Poland, situated in Central Europe, boasts a history as diverse and resilient as its people**

Poland's landscape is diverse and attractive for tourists and nature lovers. It ranges from the sandy beaches and cliffs of the Baltic coast to the rolling hills and lakes of the central lowlands to the snow-capped mountains of the Carpathians and Sudetes in the south. Poland has more than 1,300 lakes, mostly concentrated in the Masurian Lake District in the northeast. Poland also has several natural parks and reserves that protect its flora and fauna. Some of the most famous ones are Białowieża National Park, home to the European bison; Tatra National Park, where one can hike to Poland's highest peak Rysy; and Biebrza National Park.

Poland's climate is temperate with four distinct seasons: spring, summer, autumn and winter. The weather can vary depending on the region and altitude, but summers are warm and pleasant, while winters can be cold and snowy, creating a picturesque winter wonderland. The average temperature in January is around -1°C (30°F) while in July it is around 19°C (66°F). The precipitation is moderate throughout the year, with more rain in summer than in winter. The best time to visit Poland is from May to September, when it is sunny and pleasant.

Over the past ten centuries, Poland has made significant contributions to world culture, science, and religion. The country has been the birthplace of numerous renowned individuals who have left an enduring impact on various fields.

Poland is the homeland of eminent figures such as Kazimierz Pułaski and Tadeusz Kościuszko, both instrumental in aiding the development of American independence and democracy. Additionally, Pope John Paul II, Nicolaus Copernicus, the pioneering astronomer, and Maria Skłodowska-Curie, the trailblazing founder of modern physics, hail from Poland.

Among these remarkable individuals, Wojciech Oczko stands out as the author of the world's first textbook in cardiology. His pioneering work has had a profound influence on the understanding and treatment of heart-related conditions, shaping the course of medical knowledge.



# Silesia

**Silesia is a historical region of Central Europe. It has a population of about 8 million people and covers an area of about 40,000 square kilometers. It has a rich and diverse history, culture, education, and tourism.**

Silesia has a high level of education and innovation. It is home to many universities, research institutes, and technology parks. Silesia also has a strong industrial heritage and a modern service sector. It is one of the most populous and economically powerful regions in Poland and the European Union.

Silesia has a unique and diverse culture, influenced by its Slavic, German, Jewish, and other ethnic and religious groups. It has its own dialect, cuisine, architecture, and traditions, which are distinct from those of the rest of Poland. Silesia also has a strong Polish culture, which is expressed in its art, literature, music, and festivals.

Silesia is a region of contrasts and connections. It has a rich natural and industrial heritage, as well as a modern service sector. It is one of the most populous and economically powerful regions in Poland and the European Union. It is also a region of scenic beauty and cultural attractions. It has many natural parks, historical landmarks, UNESCO World Heritage Sites, and cultural events and festivals.

Silesia is a region that connects different countries, cultures, and people. It is a region that celebrates its diversity and embraces its modernity.

It is a region that invites visitors to discover its beauty and charm.



**Katowice is a city in southern Poland, the capital of the Silesian Voivodeship and the center of the Upper Silesian metropolitan area. It has a population of about 287,000 people and is one of the most populous and economically powerful cities in the European Union.**

Katowice has transformed its economy from industry-based to service-oriented, focusing on sectors such as professional services, education, healthcare, and culture. The city is home to many public and private companies, also hosts several prestigious cultural institutions, such as the Polish National Radio Symphony Orchestra, the Silesian Museum, and the International Congress Centre. The city is known for its music festivals, such as Off Festival and Tauron New Music, and its esports events, such as Intel Extreme Masters.

Home to several prestigious universities and institutions, Katowice is an educational powerhouse that draws students and researchers from around the world. Medical University of Silesia, The Silesian University, University of Economics, are just a few of the institutions that contribute to the city's intellectual vibrancy. These campuses are conflation of ideas, fostering innovation and knowledge exchange across various disciplines. In conclusion, Katowice is a city that invites exploration not only for its historical significance and architectural marvels but also for the depth of its cultural experiences, the vitality of its educational institutions, and the warmth of its people.



# Poland basic geographical data

**Location:** central Europe

**Area:** 312,696 km<sup>2</sup> (120,733 sq mi)

**Population:** 38,036,118

**Capital:** Warszawa (Warsaw)

**Religion:** more than 90% of the Polish community are Roman Catholics.

**Time:** GMT + 1

**Currency:** PLN (called ZŁOTY – Zł) Currency can be exchange at banks and exchange offices.

**Electricity:** 230 volts, 50Hz; Continental socket

**Calling code:** + 48; Internet domain: .pl

## Phones

999: Ambulance

998: Fire Brigade

997: Police

112: emergency phone

## Basic polish phrases

**Dzień dobry** – Hello/ good morning/ good afternoon

**Cześć** – Hi

**Proszę** - Please

**Dziękuję** – Thank you

**Przepraszam** – I am sorry

**Do widzenia** - Goodbye

**Nie rozumiem** – I do not understand

**Czy mówisz po angielsku?** – Do you speak English?





# Academic calendar

## Winter Semester:

Classes: 01/10/2025 – 01/02/2026

Christmas Holiday: 24/12/2025 – 06/01/2026

Examination Session: 02/02/2026 – 15/02/2026

Winter Vacation: 16/02/2026 – 22/02/2026

Re-sit Examination Session: 23/02/2026 – 08/03/2026

## Summer Semester:

Classes: 23/02/2026 – 14/06/2026

Easter Holiday: 03/04/2026 – 06/04/2026

Examination Session: 15/06/2026 – 28/06/2026

Summer Vacation: 29/06/2026 – 30/09/2026

Re-sit Examination Session: 01/09/2026 – 14/09/2026

Re-sit Examination Session (for 4th year / International program ONLY):

17/08/2026 – 30/08/2026

# Holidays in Poland

## January 1

New Year's Day

## January 6

Epiphany

## Sunday in Spring (movable)

Easter Sunday

## Monday following Easter Sunday

Easter Monday

## May 1

Labour Day

## May 3

Constitution Day

## 7th Sunday after Easter

Pentecost Sunday

## 9th Thursday after Easter

Corpus Christi

## August 15

Assumption of the Blessed Virgin Mary/

Polish Armed Forces Day

## November 1

All Saints' Day

## November 11

Independence Day

## December 25

Christmas Day

## December 26

Boxing Day



# Medical University of Silesia

**Medical University of Silesia is one for the largest medical universities in the country and the largest in the Silesian voivodeship. University was established in 1948.**

Currently, Medical University of Silesia consists of six faculties: Faculty of Medical Sciences in Katowice, Faculty of Health Sciences in Katowice, Faculty of Medical Sciences with the division of Dentistry in Zabrze, Faculty of Public Health in Bytom, Faculty of Pharmaceutical Sciences in Sosnowiec and Faculty of Medical Sciences in Bielsko-Biala.

## **UniverSUM of opportunities**

We are at the forefront of universities using virtual teaching and medical simulation. Our students can choose between three Centres of Medical Simulation, which were created thanks to financial support provided by the European Union. The students have at their disposal numerous simulation rooms of high fidelity, including: intensive care rooms, operating rooms or labour rooms. Manikins used in the centres, stand out as highly realistic (they speak, breath, cry and even bleed). Our students can practice in a virtual operating theatre and a virtual dentist's room and also use the application „Virtual patient”.

We have over 270 departments, units, clinics and branches localised mainly in the cities forming headquarters of our Faculties. High quality of classes conducted at the Medical University of Silesia is guaranteed by academic teaching staff involving more than 1500 people. Knowledge and qualifications of our didactic employees are highly recognised both in Poland and in the world. Numerous SUM lecturers received prestigious titles of Honoris Causa and serve in the boards of European or Polish scientific societies.



## **Faculty: MEDICINE**

Degree: MD

Program: International/European

Length of studies: 6 years (12 semesters)

Number of ECTS: 360

Admission: twice a year (fall or spring semester)

All education is in English language

Since 1996

### **Accreditations & Recognition:**

Polish Accreditation Committee

Accreditation Committee of Academic Medical Universities

US Department of Education

Medical Board of New York

Medical Board of California

## **Faculty: DENTISTRY**

Degree: MD

Length of studies: 5 years (10 semesters)

The program includes: theoretical, pre-clinical, clinical courses and a summer holiday internship



# Clinical hospitals



SPSK im. S. Szyszko  
Zabrze



SPSK im. A. Mielęckiego  
Katowice



GCZD św. Jana Pawła II  
Katowice



GCM im. L. Gieca  
Katowice



UCK im. K. Gibińskiego  
Katowice



Academic Center of  
Dentistry Bytom

# APPLY - step by step

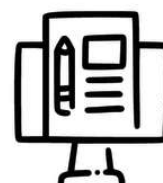
[admission.sum.edu.pl](http://admission.sum.edu.pl)



1. Choose a program



2. Make an account  
on SUM's platform



3. Follow the instructions and  
submit the application



4. Pay the application  
fee of 85 PLN.



5. NOTE: Candidates may  
be required to attend the  
entrance examination



6. Wait for the ranking list



7. Bring/post documents  
to Admission Office

# Requirements

Candidates who graduated from high school can apply for admission to University. They are expected to hand in the following documents:

- Original or notarized copy of secondary school leaving certificate
- Signed application form
- 2 photos
- English language fluency certificate
- Admission fee - 85 PLN





# About SUM

**Main website:** [sum.edu.pl](http://sum.edu.pl)

**Youtube:** SUMKatowice - YouTube

**Facebook:** Śląski Uniwersytet Medyczny

**Instagram:** @slaski\_uniwersytet\_medyczny

## Apps



- **Welcome to SUM** is a practical guide for students, doctoral students and university applicants. The software will make it easier for you to navigate around the University's buildings, campuses of the individual faculties and clinical hospitals. With the application, you will get to know the city where you study and you will plan your time after classes.



- **mStudia** download the mobile app and gain access to key information, including your timetable, grades and events.

# Visa and residency permit card

**All foreign students are obliged to apply for a student visa**, which can be issued at the Embassies or Consulates of the Republic of Poland situated on the territory of their native countries.

Upon arrival to Poland without visa all foreign students are required to arrange their **Residency Permit Card** formalities immediately.

Due to complex and time-consuming procedure of applying for the Residency Permit Card (around 2 months) it is more convenient to apply for a student visa in your country.

**Students themselves are obliged to:**

- Observe the deadlines of documents submission
- Provide all required documents
- Immediately collect official correspondence from immigration office
- Immediately respond to immigration authority request

## Required documents

**Students applying for a Residency Permit Card in Poland are required to submit the following documents:**

- 3 copies of application form (completed in Polish language)
- 4 color photos sized 4.5 cm / 3.5 cm (forward-facing head shots)
- 2 photocopies of passport
- documents certifying source of income (loan certificate or bank statement)
- Dean's letter certifying the educational status
- documents certifying no tax arrears in Poland
- copy of Medical Insurance Certificate



## Contact

Śląski Urząd Wojewódzki w Katowicach

e-mail: [wsoim@katowice.uw.gov.pl](mailto:wsoim@katowice.uw.gov.pl)

+48 32 606 32 32

Useful websites:

[cudzoziemcy.gov.pl](https://cudzoziemcy.gov.pl)

[justlanded.com.gov.pl](https://justlanded.com.gov.pl)

[immigration-poland.com.gov.pl](https://immigration-poland.com.gov.pl)

# Medical Care and health insurance

## **National Health Fund insurance**

Based on the Act of 27 August 2004 on healthcare services financed from public funds persons meeting certain requirements specified in the above mentioned Act are entitled for compulsory or voluntary health insurance in Poland.

If you are residing on the territory of Poland and are not entitled to use common healthcare services you can acquire the right to use healthcare services financed from public funds based on voluntary health insurance.

In order to conclude an agreement for voluntary health insurance please contact regional branch of National Health Fund (NFZ) to file an appropriate application and get familiar with detail terms for this procedure like required documents/statements, charges, premiums, etc.

Contact information of National Health Fund branch for Silesia region can be found at the NFZ website

In case of emergency foreign students can go to the 24-hour GP health care unit or use the hospital emergency.

The following health care unit is in charge of students' obligatory medical checkup, based on cooperation with the University in year 2023:

AGMED Sp. z o.o. ul. Morcinka 15-17, 40-124 Katowice.

# Cost of living

The cost of living in Katowice is generally lower than in other major cities in Poland. According to Numbeo, the approximate monthly costs for a student in Katowice are:

---

**Accommodation:** 1500-2500 PLN

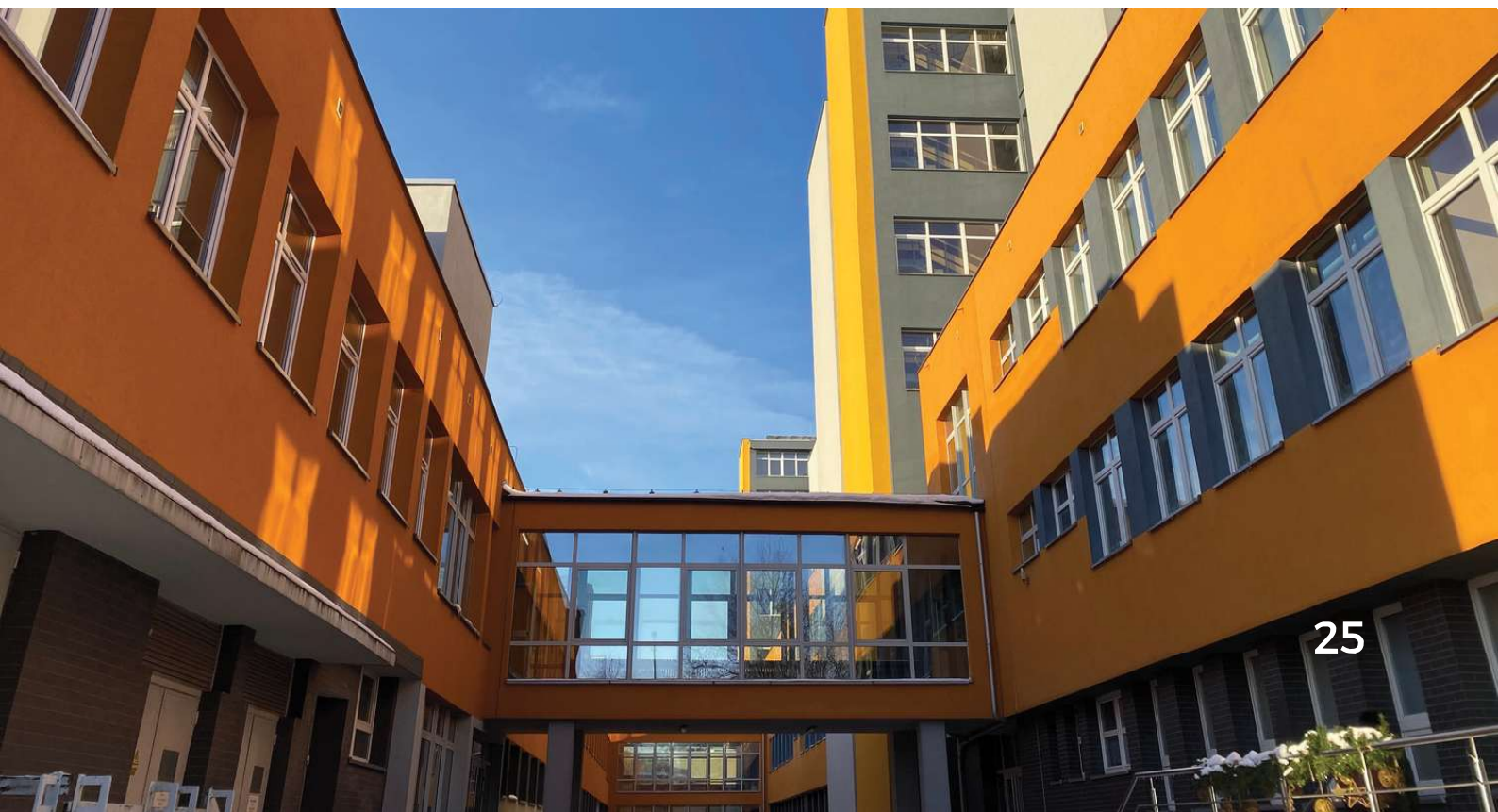
**Food:** 1000-1500 PLN

**Transport:** 120-200 PLN

**Entertainment:** 200-500 PLN

---

These are just approximate costs and may vary depending on your lifestyle and the type of accommodation you choose.



# Accommodation

## KATOWICE

Dormitories are located on the campus of the University at 24 and 26 Medyków Street in Katowice-Ligota.

Dormitory at 24 Medyków Street offers 112 single rooms.

Each room has:

- a kitchenette
- a bathroom with a sink
- shower or bathtub
- a toilet
- access to the Internet
- quiet study rooms
- laundry
- Parking

According to the SUM Rector's Ordinance, the price list is as follows:

**Basic standard rooms:**

Place in a 21 m<sup>2</sup> room - PLN 1 136.00 per person

Place in a 27 m<sup>2</sup> room - PLN 1 228.00 per person

**Rooms of a higher standard:**

Place in a 21 m<sup>2</sup> room - PLN 1 344.00 per person

Place in a 27 m<sup>2</sup> room - PLN 1 460.00 per person

## CONTACT

Student Dormitory in Katowice  
contact information  
+48 (32) 208 85 70  
email: bursa@sum.edu.pl

# ZABRZE

Dormitory No. 1 is located on the campus of the University in Zabrze-Rokitnica at 19 Jordana Street.

There are 89 rooms with Internet access, grouped into 39 segments.

The segment includes 2 or 3 rooms and a sanitary facility. Kitchens are shared, 2 on each floor. In Dormitory No. 1 is inhabited by students of medicine, dentistry / including those studying in English / and emergency medical services at the Faculty of Medicine in Zabrze as well as public health and dietetics at the Faculty of Public Health in Bytom.

In Dormitory there are 2 laundries, 4 quiet study rooms and a TV room.

## CONTACT

Student Dormitory in Zabrze

contact information:

phone: +48 (32) 275 50 37

e-mail: [dszabrze@sum.edu.pl](mailto:dszabrze@sum.edu.pl)



# Traveling by plane

It is very easy to travel to the City of Katowice.

You can take a flight to Katowice-Pyrzowice Airport (KTW), which is situated about 34 km (21 miles) from the city downtown.

For those who will not manage to get a straight connection to Katowice, there is a possibility to fly to Krakow-Balice, the John Paul II Airport (KRK) – around 80km from Katowice. Other international airport in Poland are located in Warsaw (around 300 km), Gdansk (around 450km), Poznan (around 300km), Rzeszow (around 330 km), Szczecin (around 600km), and Wroclaw (around 370km).

## **Timetable you will find on website:**

Katowice Airport / By bus ([katowice-airport.com](http://katowice-airport.com))

# Traveling by train

It is worth to use trains as it is relatively fast, environment friendly, and most importantly, students under 26 with a valid polish student ID are eligible for 51% discount. Polish State Railways (PKP) offers a variety of connections not only in the area of Poland.

## **Timetable you will find on website:**

Passenger Area ([pkp.pl](http://pkp.pl))

## **REMEMBER**

to purchase ticket before enter the  
train!

You can purchase ticket one month before trip.

# Public transport

## Tickets for buses and trams:

- **Single travel ticket** are available in the zone-time version (passengers pay for zones - where one zone is one city, or for the time)

**Mobile applications** enabling to buy tickets via a mobile phone: SkyCash, mPay, moBiLET, zBiletem, jakdojade and Mobilny ŚKUP.

- **Medium-term tickets** - They entitle to travel by all lines of public transport organised by the ZTM (buses, trams, and trolleybuses).

Tickets are valid from the moment of activation in a validator during the first journey till 23:59 of the same day

- **Long-term ticket** - Passengers can use the following long-term tickets: 7-day, City 30 days, 2 Cities 30 days, City 90 days, 2 Cities 90 days, Network 30 days, Network 90 days and Network 180 days.
- **ŚKUP The Silesian Public Services Card** is an urban transport ticket

## More information (English version)

ZTM ([metropoliaztm.pl](http://metropoliaztm.pl))





# Erasmus+

## ERASMUS+ program

- open to students of all nationalities
- chance of a semester or academic year abroad at one of the many universities in partnership with SUM
- options include universities in Bulgaria, Czech Republic, Germany, Cyprus, Spain, France, Croatia, Hungary, Italy, Portugal, Sweden, Slovenia, Slovakia and Turkey
- <https://student.sum.edu.pl/outgoing-students/>



# Important addresses

## **Rector's office**

15 Poniatowskiego Street  
40-055 Katowice

## **Dean's offices:**

### **Faculty of Medical Sciences in Katowice**

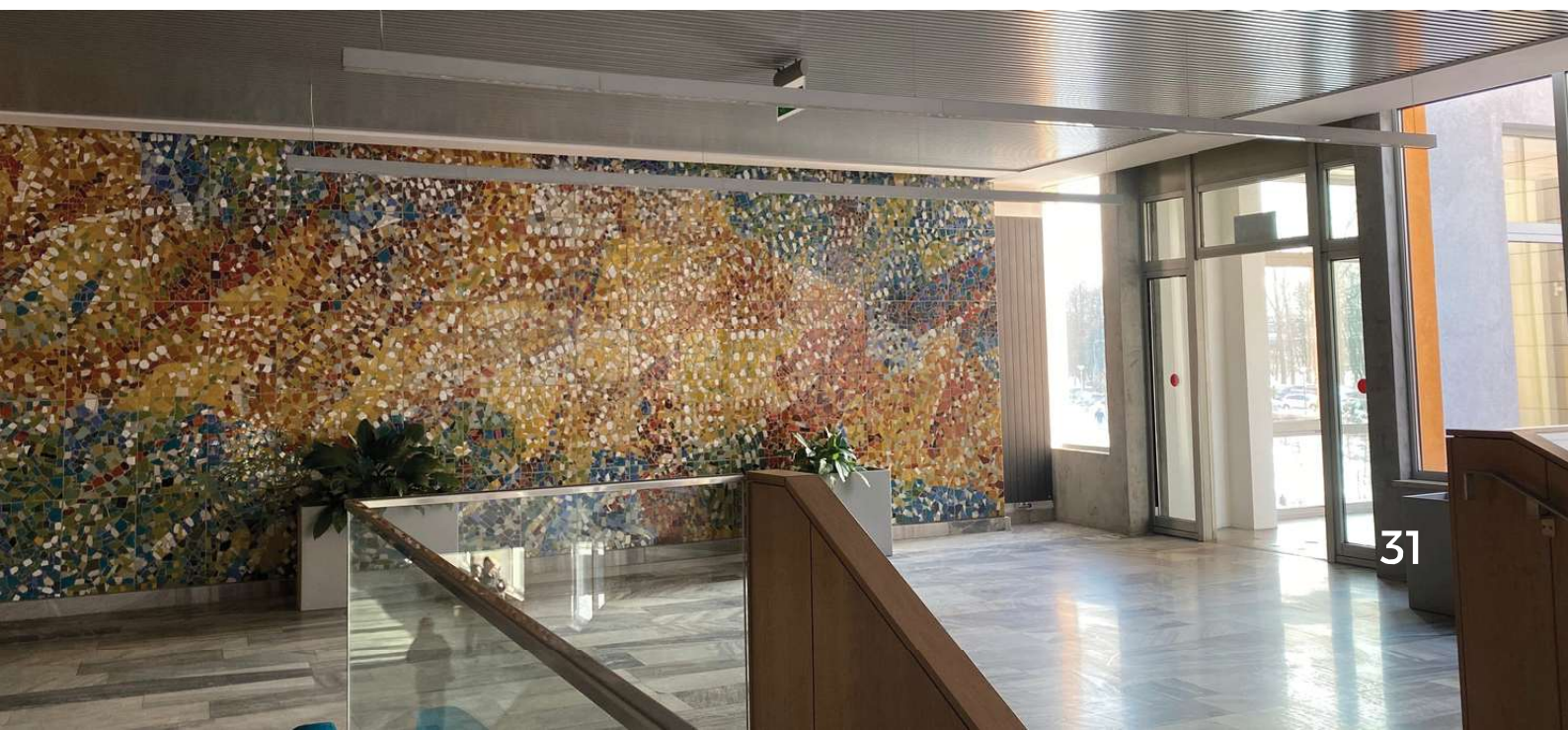
18 Medyków Street  
40-752 Katowice  
phone: +48 32 2088689

### **Faculty of Medical Sciences in Zabrze**

pl. Traugutta 2  
41-800 Zabrze  
phone: +48 32 370 52 42

## **Welcome Centre**

12 Medyków Street  
40-752 Katowice  
phone: +48 32 208 8590; email: [welcome@sum.edu.pl](mailto:welcome@sum.edu.pl)



## **1. Do you organise orientation days for the new students?**

We organize inauguration ceremony of the academic year and orientation meeting for new coming students. This event is arranged in cooperation with Student Government.

## **2. Do you have an International Relations Office or a department who can provide help for international students?**

In any matters related to their study students can contact the Dean's Office on regular basis. In other issues an assistance can be also provided by Student Government representatives.

## **3. Do you have any volunteer work opportunities at or outside the university?**

If student is interested in volunteer work as a medical staff he/she should contact the hospital management or head of the Department on their own.

## **4. Can I submit documents in a language other than Polish or English?**

The documents originally issued in a language other than Polish or English should be accompanied by a sworn translation into English.

# Embassies and consulates in the Republic of Poland

## **Embassy of Canada**

1/5 Matejki Street  
00-481 Warszawa  
Phone: +48 22 584 31 00

## **Embassy of Pakistan**

63 Wiertnicza Street  
02-952 Warszawa  
Phone: +48 22 849 48 08

## **Embassy of the Republic of India**

2 Myśliwiecka Street  
00-459, Warszawa  
Phone +48 22 540 00 00

## **Embassy of United Kingdom**

12 Kawalerii Street  
00-468 Warszawa  
Phone: +48 22 311 00 00

## **Embassy of Israel**

24 Krzywickiego Street  
02-078 Warszawa  
Phone +48 22 597 05 00

## **Embassy of the United States of America**

Al. Ujazdowskie 29/31  
00-540 Warszawa  
Phone: +48 22 504 2000

## **Embassy of Nigeria**

22b Kosiarzy Street  
02-953 Warszawa  
Phone: +48 22 651 53 05

## **Embassy Dubai**

59 Złota Street  
Skylight building, 19 floor  
00-120 Warszawa,  
Phone: +48 22 222 20 20

## **Embassy of Norway**

26 Lecha Kaczynskiego Street  
Building Focus  
00-609 Warszawa  
Phone: +48 22 696 40 30

# Admission office

Admission Office  
14 Warszawska Street  
40-006 Katowice

[admission.sum.edu.pl](http://admission.sum.edu.pl)  
e-mail: [admission@sum.edu.pl](mailto:admission@sum.edu.pl)

phone: +48 (32) 208 35 98  
mobile: +48 513 970 348







**Medicine**  
**Medicine and Dentistry**  
**Pharmacy**  
**Medical Biotechnology**  
**Nursing**  
**Midwifery**  
**Physiotherapy**  
**Public Health**  
**Dietetics**

